

# -Pheasant Run-

Sheet 3 of 3

180

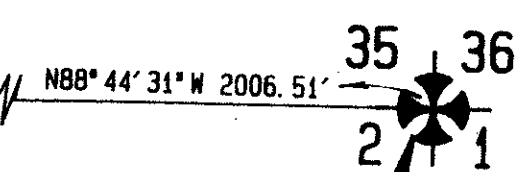
NORTH LINE OF SECTION 2/44/42 S88°44'31"E 689.89'

WEST PALM BEACH CANAL  
SOUTH FLORIDA WATER MANAGEMENT DISTRICT CANAL C-5

(DEED BOOK 66, PAGE 255)

S88°44'31"E 600.04'

TRACT "O" 40' CANAL EASEMENT (PLAT BOOK 50, PAGE 7-76)

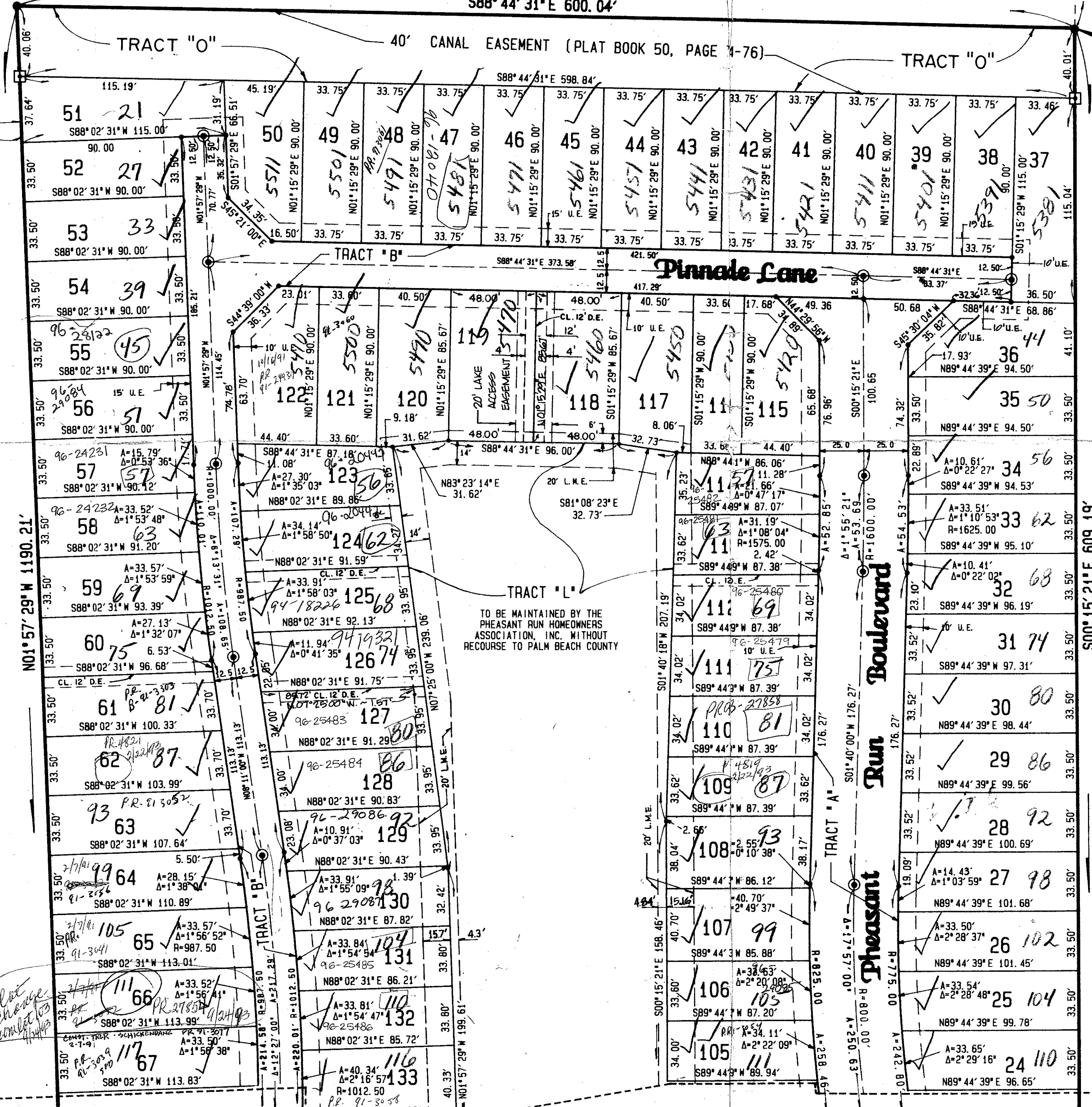


P O C  
N. E. CORNER OF  
SECTION 2/44/42

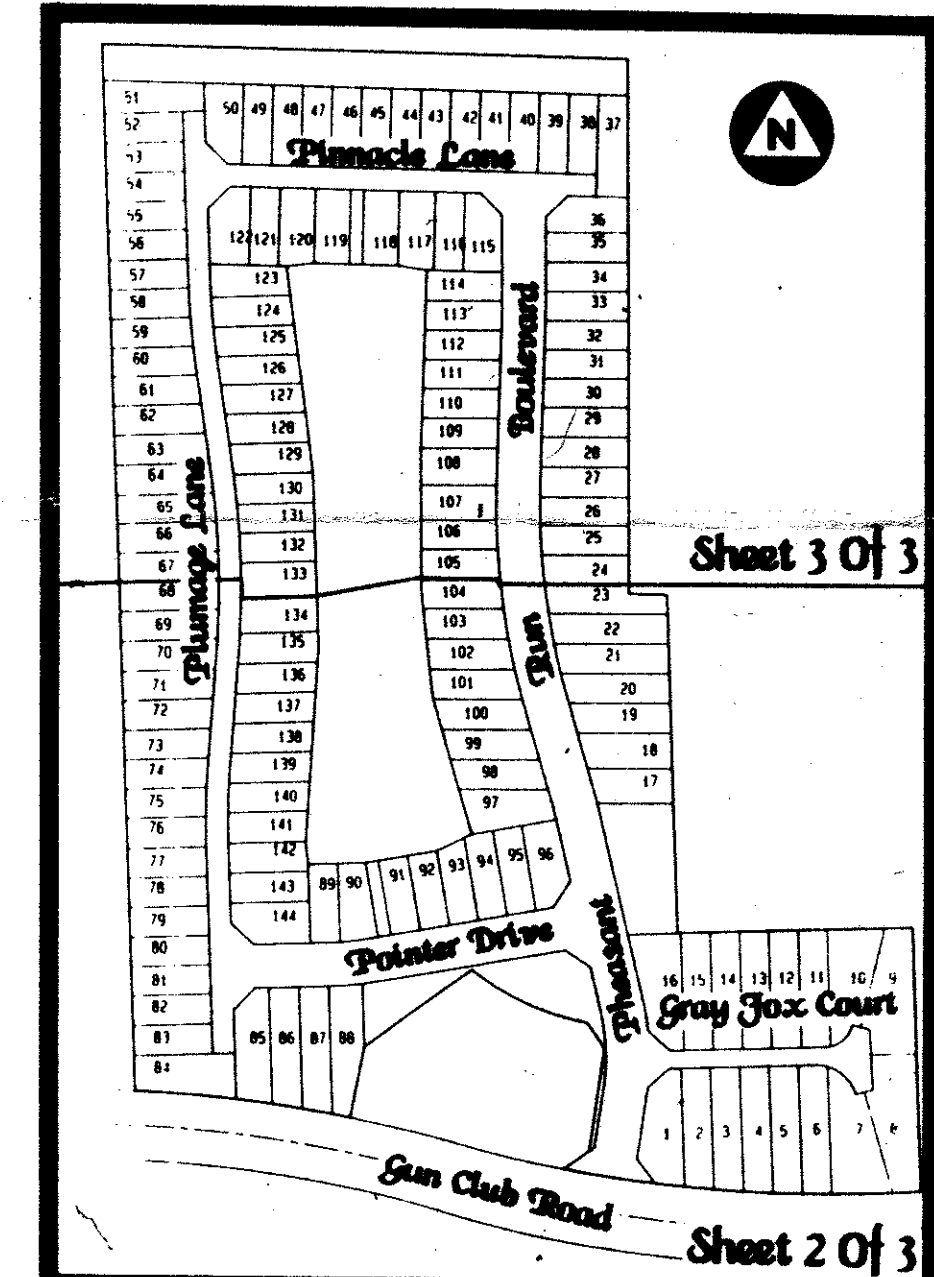


0' 40' 80' 160'  
Graphic Scale In Feet: 1"=40'

LAKE WORTH DRAINAGE DISTRICT EQUALIZING CANAL E 3  
(O.R.B. 2640, PAGE 876 & O.R.B. 3348, PAGE 1428)



NORTH ONE-HALF OF TRACT 6  
MODEL LAND COMPANY  
(PLAT BOOK 5, PAGE 8)



-Key Map-  
Not To Scale

SUBDIVISION # PHEASANT RUN  
BOOK 62 PAGE 180  
FLOOD ZONE IS FLOOD MAP # 1513  
QUAD # 33 ZONING RM  
SE 21/4/42 ZIP CODE 33445  
PUD NAME PHEASANT RUN TAZ 280

Match Line  
See Sheet 2 of 3

Match Line  
See Sheet 2 of 3

- Legend:**
- ⊙ Indicates A Permanent Reference Monument # 2424 (P.R.M.)
  - ⊙ Indicates A Permanent Control Point # 2424 (P.C.P.)
  - D.E. Indicates A Drainage Easement
  - L.A.E. Indicates A Limited Access Easement
  - L.M.E. Indicates A Lake Maintenance Easement
  - U.E. Indicates A Utility Easement

ADD. BY [Signature]  
CHECKED BY [Signature]

62/180

This instrument was prepared by Wm. R. Van Campen, R.L.S., & Gene D. Bowling, Jr. in and for the offices of Bench Mark Land Surveying & Mapping, Inc., 4152 W. Blue Heron Boulevard, Suite 121, Riviera Beach, FL.

**BENCH MARK**  
LAND SURVEYING & MAPPING, INC.  
WEST PALM BEACH, FLORIDA - RIVIERA BEACH, FLORIDA

**Record Plat**  
**Pheasant Run**

OWN WALDO CKO WVC DATE 12/16/88 W.D. NO. P89  
SCALE 1"=40' SIZE L FB P SHEET 3 OF 3